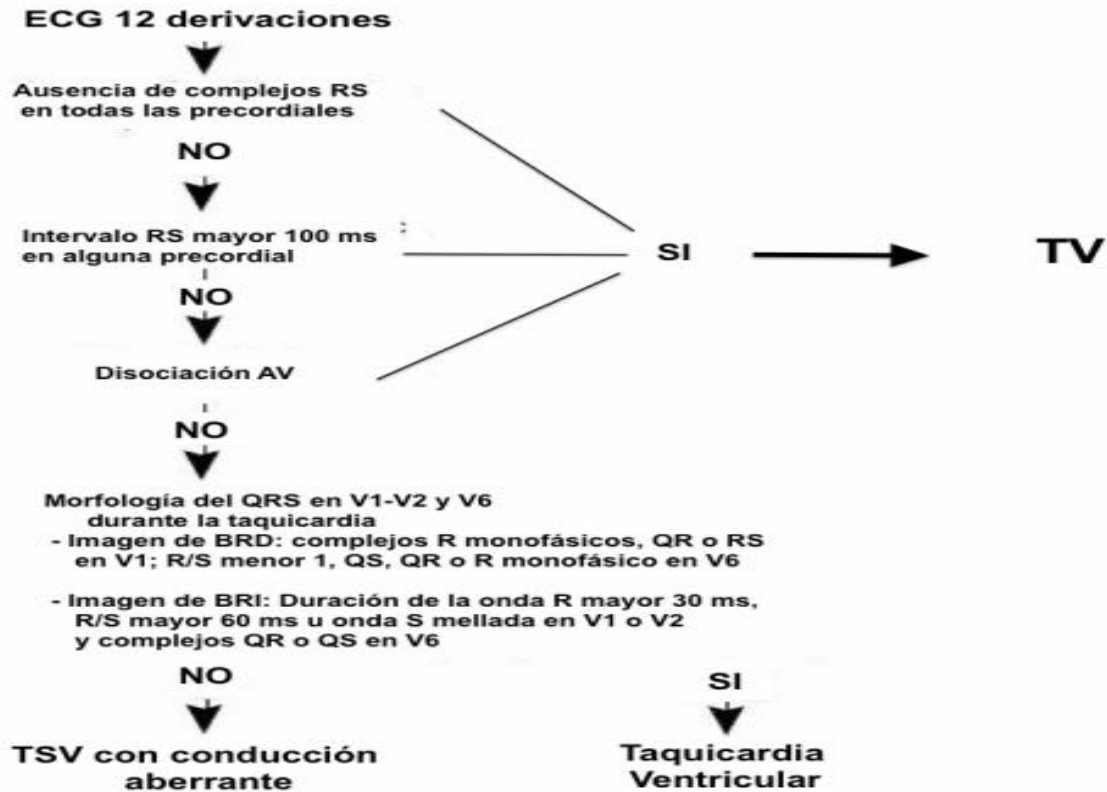


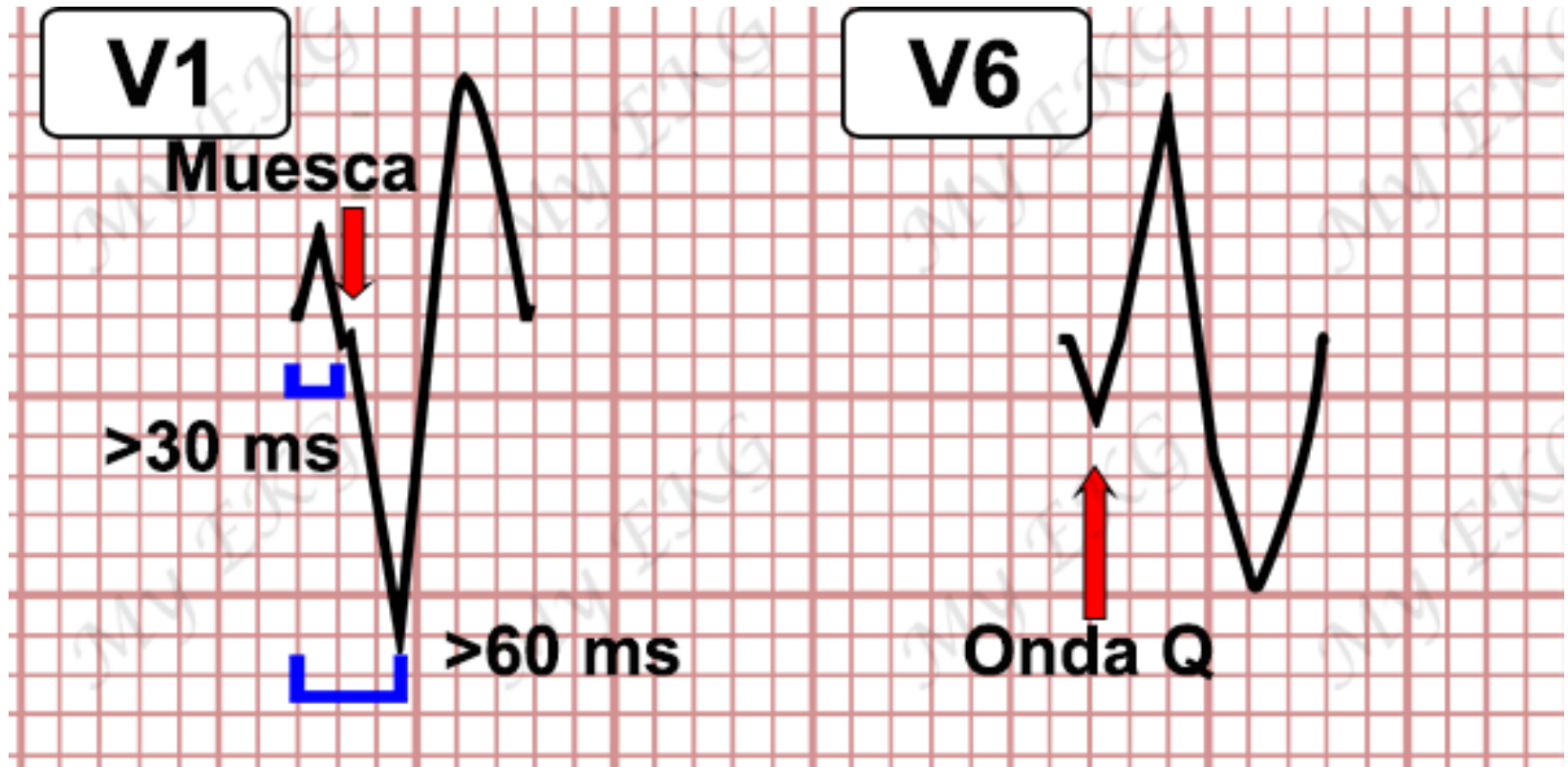
# Taquicardia ventricular

## Taquicardias Ventriculares

1. Taquicardia ventricular monomórfica sostenida (sostenidas o no sostenidas).
2. Taquicardia ventricular polimorfa.
3. Taquicardia de puntas torcidas.
4. Fibrilación ventricular.

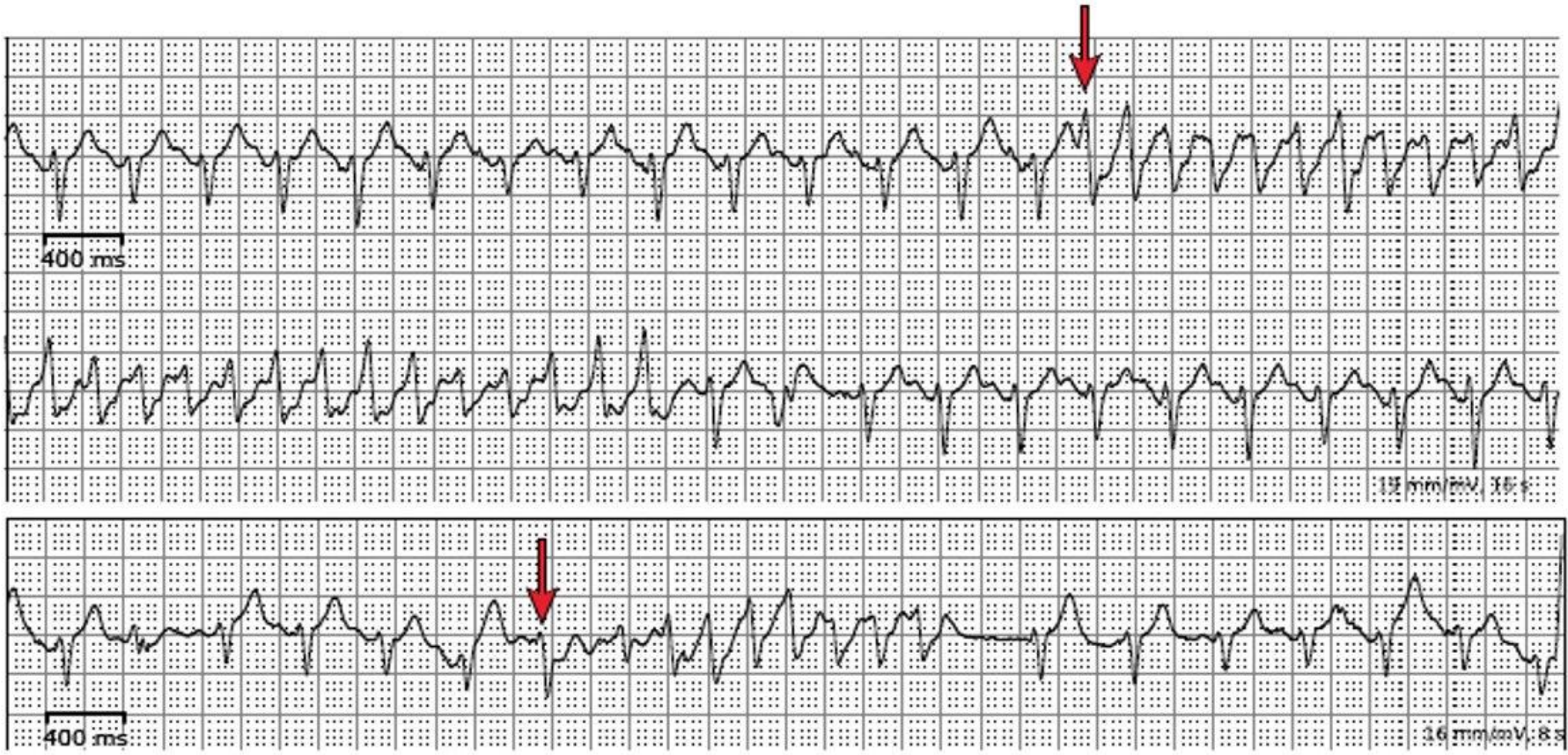
# Criterios de Brugada



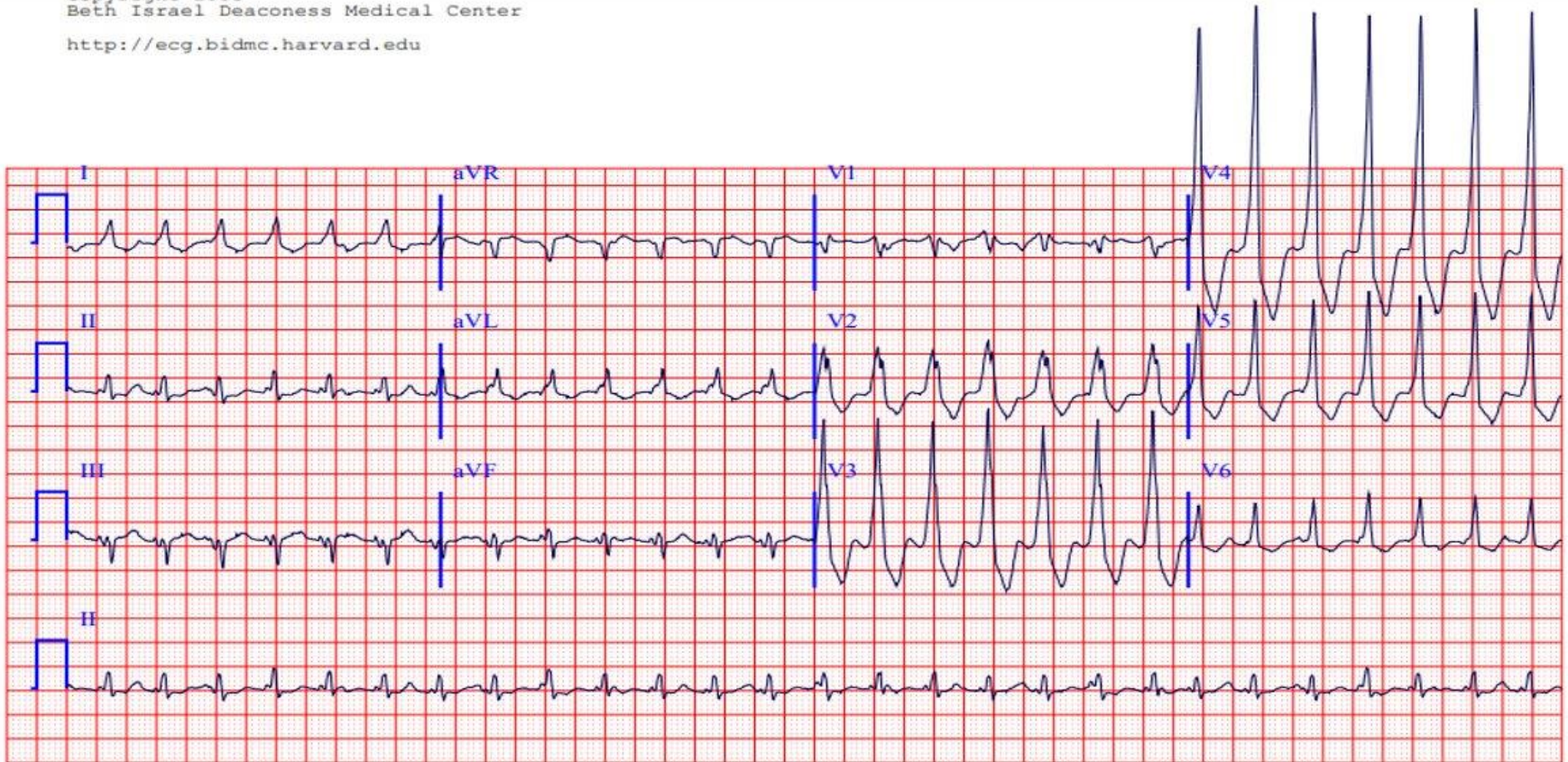


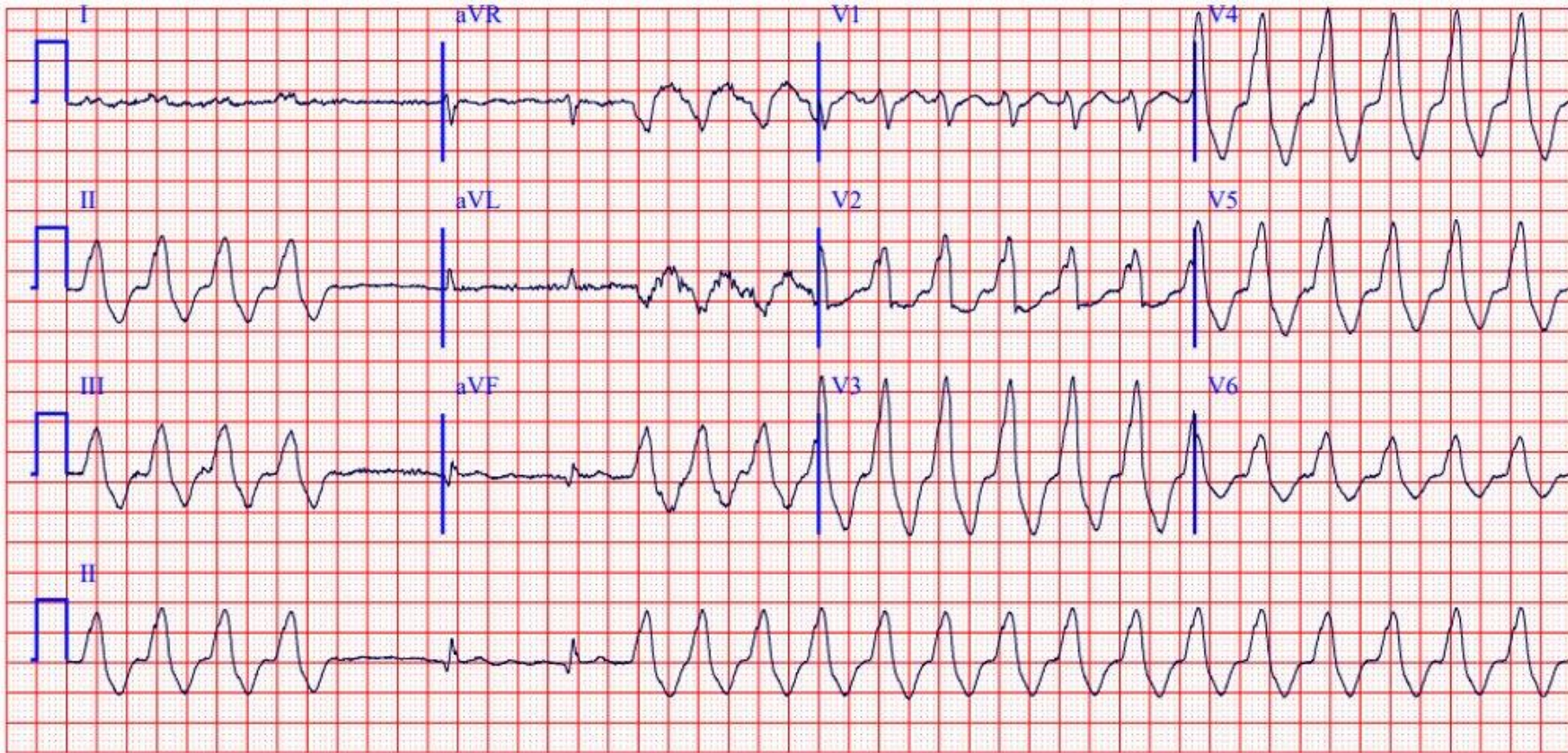
# Hallazgos patognomónicos

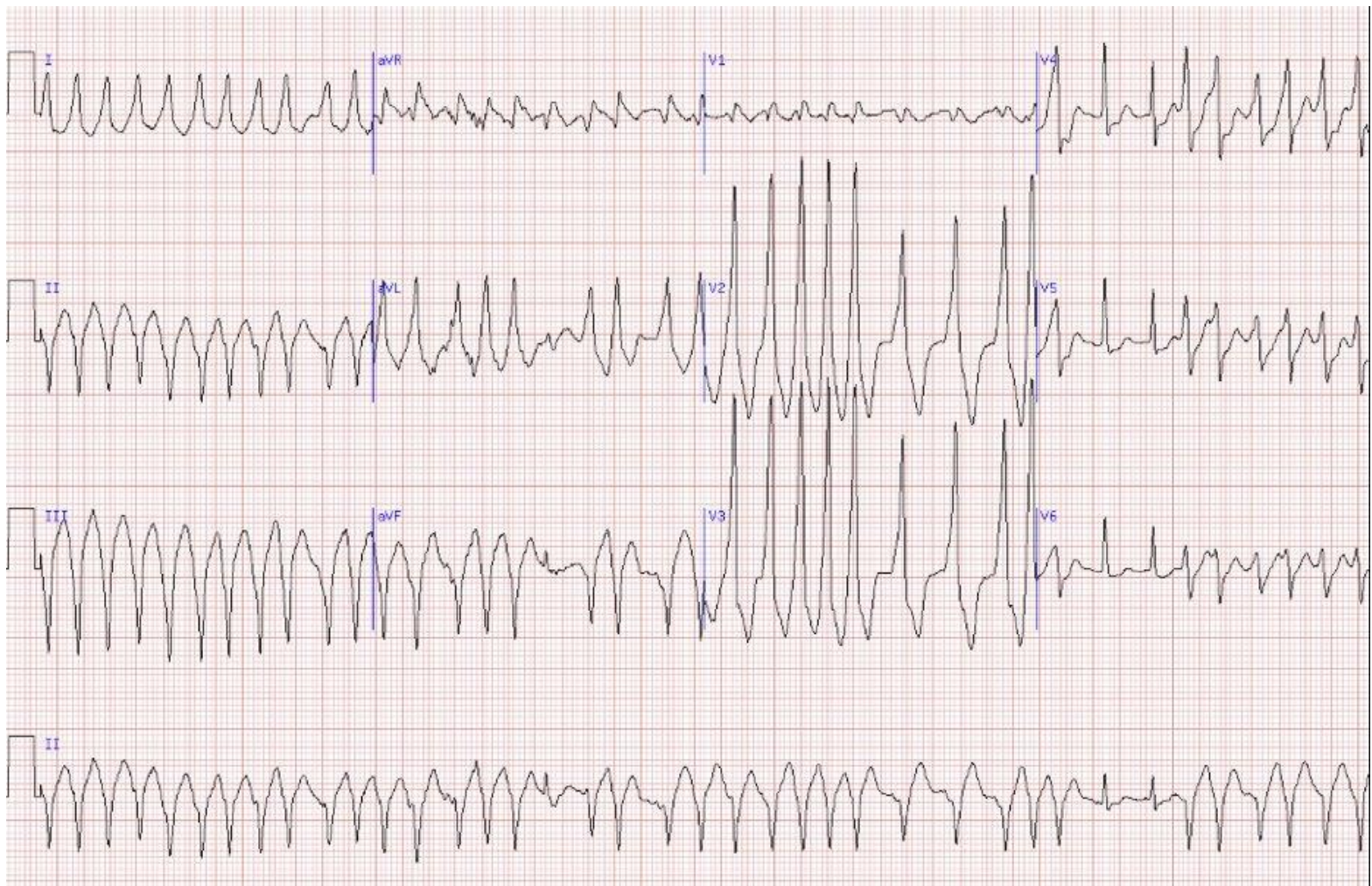




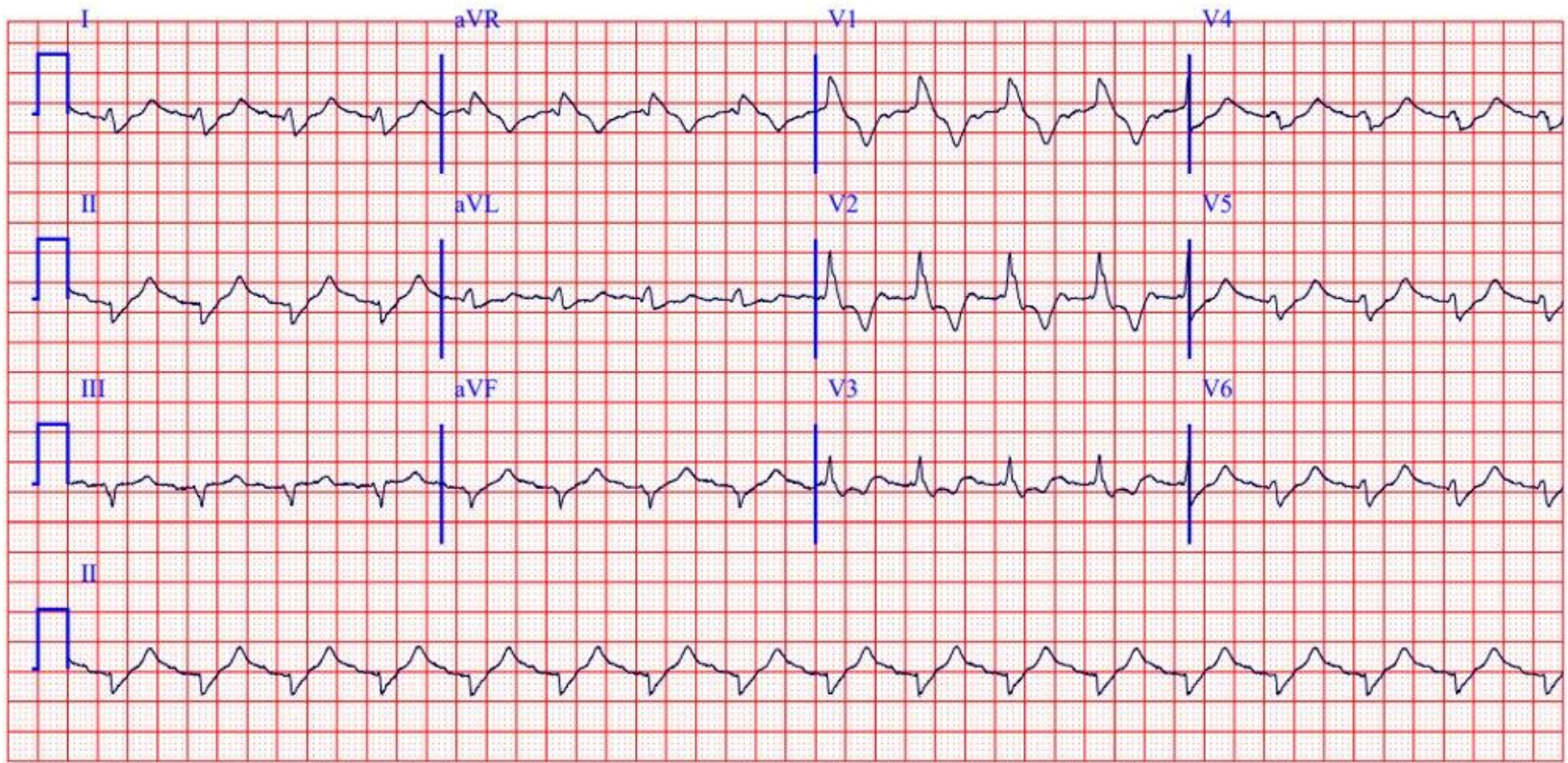
Copyright 2003  
Beth Israel Deaconess Medical Center  
<http://ecg.bidmc.harvard.edu>









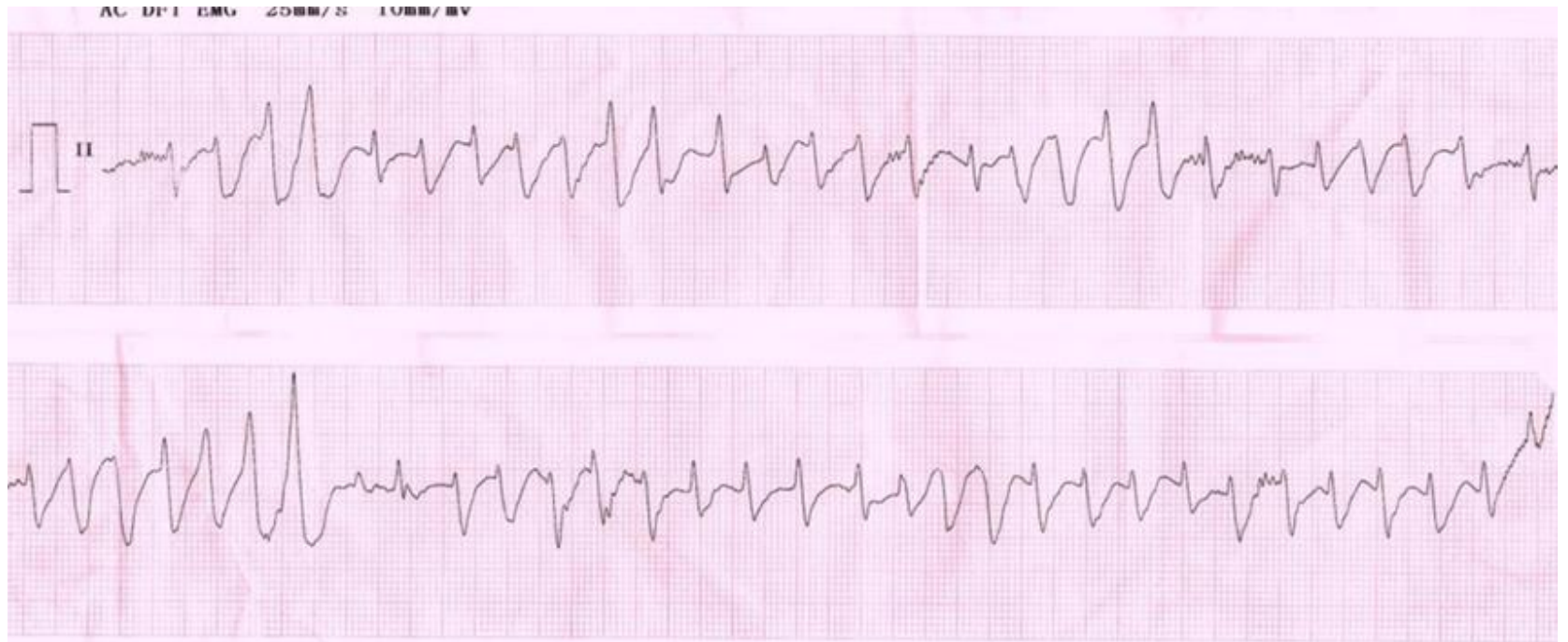


ECG Wave-Maven / Beth Israel Deaconess Medical Center

25 mm/sec, 10 mm/mV

# Taquicardia ventricular polimórfica

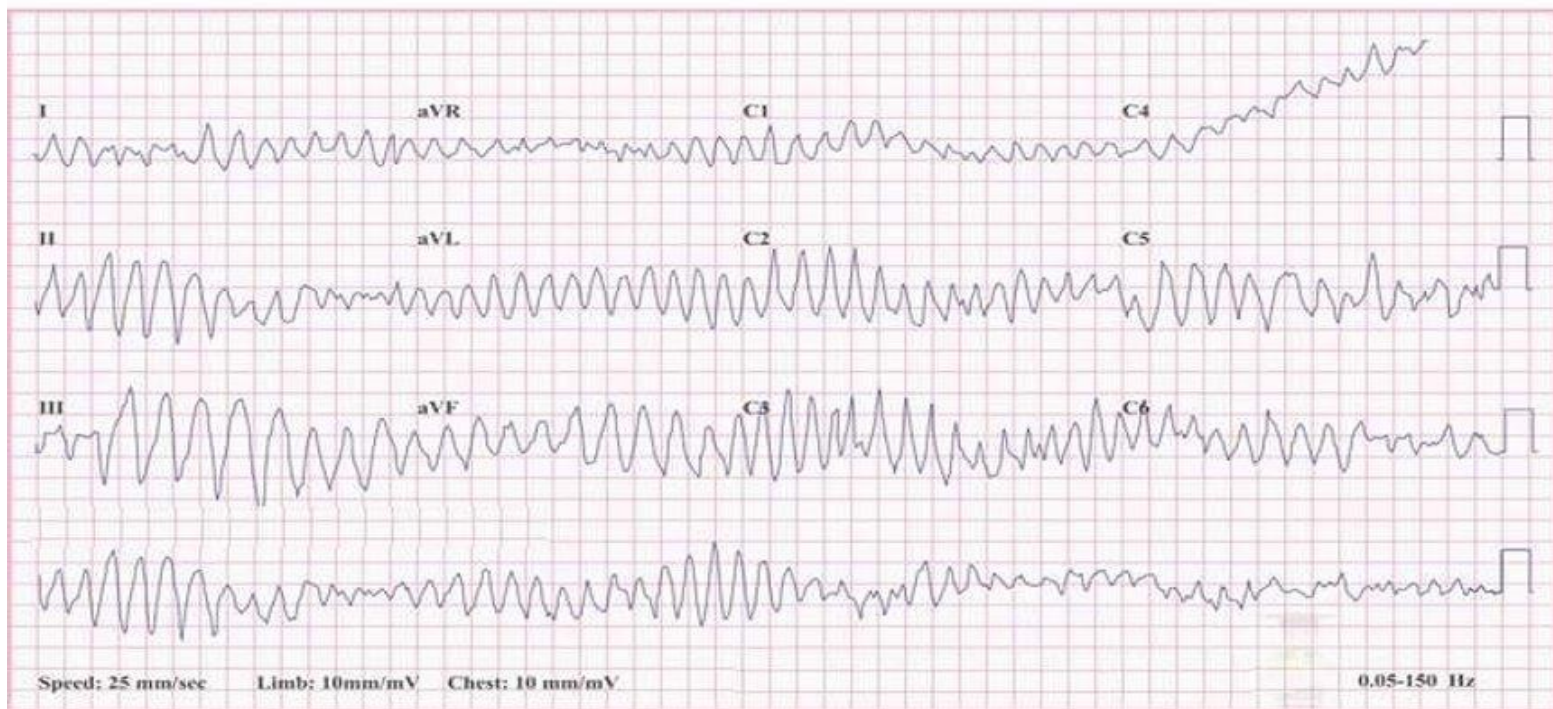
- Los focos arritmogénicos son originados en varios puntos ventriculares.
- Hay más de 2 morfologías diferentes (no se deben confundir una morfología con latidos de escape o latidos de captura).





# Taquicardia de puntas torcidas

CARDIO-LAB



# Fibrilación ventricular

